

Terminal Transport May 2024

NEW EQUIPMENT

Although I did not have any intention to upgrade any new equipment this year due to market conditions, I came across some tractors that were too good to pass on. The company will be acquiring 4 2025 International LTs in the next several months. Our 2019 Internationals will be coming off the road and be headed to auction in June. These trucks were part of a large carrier order and this carrier decided not to take all the trucks. Rush International of Forest View, IL had the trucks and were aggressive in their pricing. This will give us a chance to upgrade our equipment, get ahead of the new EPA rulings and hopefully lower our operating costs. The trucks are conducive to what we are running now and will be going to Plover shop over the next several months to be fitted with camera's, satellites, bumpers, decals, etc. The 2019 Internationals will be removed from service over the course of the next few months.



Driver Corner



Johnny Pitts is this month's featured driver. He lives in Baton Rouge, LA! He started driving in September of 2021 and just celebrated 3 months with Terminal. His respect and admiration for professional drivers attracted him to the career. He prides himself on doing things the right way. When not driving, he likes the finer things in life cigars, chess, and golf. He also plays the saxophone. His advice to other drivers to keep doing the good work and it'll all come together. We're glad to have you, Johnny! Keep up the good work.

Contents

NEW EQUIPMENT	1
WEATHER.....	1
FINANCIAL ADVISOR	2
SLACK ADJUSTERS.....	2
FUEL	2
QUARTERLY BONUS WINNER	3
ROADSIDE INSPECTIONS.....	3
MAY TRAINING.....	3
2024 ROAD BLITZ MAY 14 - 16 ...	3
\$10,000 TOP DOG PRIZE.....	3
TOP DRIVERS.....	4

WEATHER

This is another reminder of the weather in May can change very quickly and become very violent. In the West you can expect high winds which can blow a truck over. **DO NOT TRY TO OUTFRAN THE WIND!! PULL OVER UNTIL IT DIES DOWN!** In the Midwest, storms can turn into tornados. Watch and listen to the weather reports and if necessary, seek shelter. Out East, we can have the same situation and rainstorms can flood roadways and underpasses. Plan your trip accordingly and make sure checking the weather on your route is part of your pre-trip. An ounce of prevention is worth a pound of cure! Saying from my grandmother. If you have weather questions, call Gary.

CSA SCORES

As of 3/29/2024

Category	Percentile
Unsafe Driving	49% ↓
Crash Indicator	None in the past year N/A
Hours of Service	42% ↓
Maintenance	40% ↓
Controlled Substance	19%
HAZMAT	< 5 HM placardable vehicle inspections
Driver Fitness	0%

Incidents last month

Driver tore up turf at receiver - \$400

Driver clipped bank drive thru awning and tore up landscaping turning around unauthorized area - \$TBD

4Wheeler hit our turning trailer - \$TBD

FINANCIAL ADVISOR

Eric Samshal, our Edward Jones advisor, will spend several hours in our office to meet with anyone either in person or by phone. He will answer any questions or give advice on the 401(k) benefit. He will be in our office on Friday, May 24th at 1:30.

SLACK ADJUSTERS

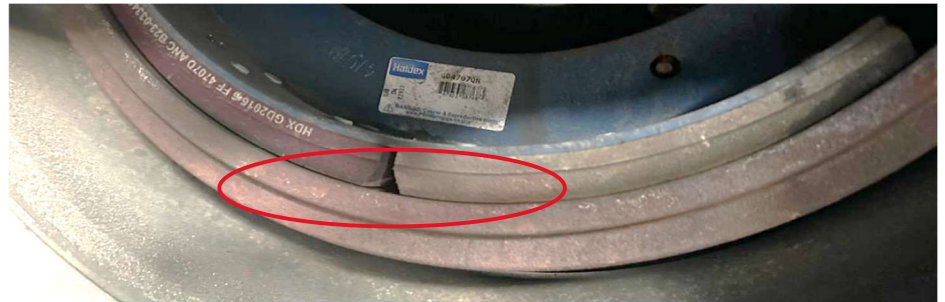
The slack adjuster is a mechanical component that automatically adjusts the clearance between the brake shoes and the drum, ensuring that the brakes remain effective and safe as they wear down over time. Regular inspection and maintenance of slack adjusters are important for the proper functioning of the braking system on a semi-trailer.

The images below show brakes out of adjustment (note the gap) and those in adjustment – note that the gap is barely visible. Make sure you know what you are looking for when inspecting your equipment. If you are unsure, ask someone.

OUT OF ADJUSTMENT



PROPER ADJUSTMENT



FUEL

As you are aware Nick has kept you up to date on the fuel prices at The Loves Travel Plaza's in our system. We are now looking to narrow the stops we are making in hopes of driving volume through a smaller group of fuel stops.

ROADSIDE INSPECTIONS

LAST MONTH:

4 clean roadsides

Both thanks to:

- Kenney Eastwood - level III - \$30**
- David Martinez – level III – \$30**
- Lewis Lynch – level III - \$30**
- Jeff Hallquist – level III - \$30**

0 Failed Roadsides

Long Idle Cost Month

Of Gallons Burned: **1373** ↓

Average Fuel Cost: **\$4.002** ↓

\$ Wasted: \$5494 ↓

Safety Bonus Program

10,500 miles*	10,500+ miles	\$200
11,500 miles	11,500+ miles	\$200
Moving MPG*	Determined threshold	\$50
Long idle %*	Under 25%	\$100
HOS compliance*	0 violations	\$50
No citations, accidents, Incidents*	0 issues	\$50
\$650 every month! *\$250 Quarterly Bonus Eligibility *\$1000 Annual Bonus Eligibility		

Menomonie, WI is the place to fuel in WI. Fargo would be another place to fuel when possible. In South Dakota there is Sioux Falls which is our first preference and Box Elder, SD next when traveling West. If traveling to Memphis, please fuel in Memphis or West Memphis, AR. This does not mean you run out of fuel because you are not near these locations, but if you are passing these locations, stop to add fuel.

Remember if destine to Internationals Falls, you need to fuel in Fargo then in Wisconsin. Minnesota fuel has a high concentration of soy diesel and is not compatible with the new engines, especially in the winter. We appreciate your use of our network as much as possible. If you have any questions call Nick.

QUARTERLY BONUS WINNER

There were 11 eligible entries for the quarterly bonus: Corbett (2), Chris, Mario (3), Grace (2), David, Tom (2). You can become eligible by driving 10500 miles, having a MPG above 7.5, and Idle % under 25%, no HOS violations, and no accidents, citations, or other issues. Tom was randomly selected as the winner for quarter 1 and for his efforts will get a \$250 bonus.

All eligible drivers will also be eligible for the \$1000 bonus at the end of the year. Keep up the good work!

MAY TRAINING

Ongoing training for May has been assigned. This month's topics are Driving in Construction Zones, PC use, and Drug and Alcohol education.

You are compensated \$10 for the time required to complete the training, but if you do not complete it by the end of the month, you will lose your \$50 bonus for no issues. You can always find the training by signing in at portal.tenstreet.com/terminaltransport you should have also received an email with a link to the training, and lastly, you can use the driver pulse app to access and complete the training

2024 ROAD BLITZ MAY 14 - 16

International Roadcheck is an annual three-day event when CVSA-certified inspectors conduct compliance, enforcement and educational initiatives targeted at various elements of motor carrier, vehicle and driver safety.

International Roadcheck is the largest targeted enforcement program on commercial motor vehicles in the world, with nearly 15 trucks and motorcoaches inspected, on average, every minute across North America during a 72-hour period.

Since

RECENT HIRES

None

BIRTHDAYS

Jason Jacobson 15th

Greg Crawford – 16th



ANNIVERSARIES

Justin Bantz – 1 year

Greg Crawford – 1 year (since return)

Tom Stone – 6 years

Don Johnson – 15 years!!!

Thank you for being a part of our team!

The next International Roadcheck is scheduled for May 14-16, 2024. The focus is tractor protection systems and alcohol and controlled substance possession.

International Roadcheck aims to increase awareness of the tractor protection valve, trailer supply valve and anti-bleed back valve, which may be overlooked during trip and roadside inspections.

Over the three days of International Roadcheck, inspectors will conduct their routine North American Standard Level I Inspection, which is a thorough 37-step inspection procedure consisting of the examination of vehicle components and driver documentation and requirements.

During the vehicle portion of the Level I Inspection, inspectors will ensure the vehicle’s brake systems, cargo securement, coupling devices, driveline/driveshaft components, driver’s seat, fuel and exhaust systems, frames, lighting devices, steering mechanisms, suspensions, tires, wheels, rims, hubs, and windshield wipers are compliant with regulations. In addition, inspections of motorcoaches, passenger vans and other passenger-carrying vehicles will also include the examination of emergency exits, seating, and electrical cables and systems in the engine and battery compartments.

A vehicle that successfully passes a Level I or V Inspection without any critical vehicle inspection item violations may receive a CVSA decal, which is valid for three months.

If out-of-service violations, as outlined in the North American Standard Out-of-Service Criteria, are found during an inspection, the vehicle will be restricted from operating until all out-of-service violations have been properly addressed.

During the driver portion of an inspection, inspectors will check the driver’s operating credentials, hours-of-service documentation, DACH status (in the U.S.), seat belt usage, and for alcohol and/or drug impairment.

If an inspector identifies driver out-of-service violations, such as not possessing a valid or necessary operating license or exhibiting signs of impairment, the inspector will restrict that driver from operating their vehicle.

\$10,000 TOP DOG PRIZE

It’s the beginning of the new Top Dog prize eligibility. To be eligible to win the \$10,000 prize you need to complete at least one TLC Top Dog quiz each quarter - you get a \$20 bonus each quarter for doing this. Complete all quizzes for a quarter and you get an entry for a \$250 prize. If you are one of the drivers who completes a quiz during each quarter and remain employed in good standing, you have a chance for a \$10,000 prize. Last year there were 325 eligible drivers. That’s a 1/325 chance at \$10,000. That’s pretty good odds for something that takes 5 minutes a month. Quizzes can be found at tlchrconnect.com If you need any help with this, contact Nick.