



THANKSGIVING

I'd like to extend a Happy Thanksgiving to all of our partners and associates. We are grateful for all of you!

As always, we will try to get drivers through or to their houses on Thanksgiving especially those in the upper Midwest, but the only guaranteed ones are those that have put in for vacation time. We guarantee that we will get you home for Christmas.

DISTRACTED DRIVING

Being distracted by a mobile device is one of the leading causes of car accidents worldwide. In an effort to combat this, both Apple and Android developers have created driving modes for cell phones.

Driving modes are safety features used to make sure you're not distracted by your device so you can focus on driving. Features such as hands-free and **Do Not Disturb** give drivers more freedom. Driving modes allow you to remain connected while driving. Apple's Siri or one of the Android Smart Assistants use driving modes to make apps more driver-friendly and allow you to get to your destination undisturbed.

With Apple devices you can activate **Do Not Disturb While Driving** which will block all incoming calls or messages, as well as automatically notifying the person who's contacting you that you're driving. In an emergency, a message can still be sent through by sending the word "urgent". Then you will be alerted by a specific sound so that you can pull over and safely deal with the situation.

Directions for set up:

Apple

1. Go to *settings*
2. Find *Focus*
3. Click + in top right
4. Choose *Driving*
5. Click *Next*
6. Choose *Allow*
7. Choose *Turn Driving on Automatically*
8. You're all set

Android - *Varies by model*

1. Open *Settings*
2. Find *Sounds or Connected Devices*
3. Tap *Driving Mode or Do Not Disturb*
4. Select *Turn on Automatically*
5. You're all set

**DAVE RYSKIEWICZ
RETIRES**



After 23.5 years with Midwest then Terminal, Dave officially retired 10/28/2022. He is looking forward to projects around the house, yard, and his shop. He's even looking forward to having time for fishing. Thank you for your hard work and years of service, Dave. Enjoy Retirement!

Contents

DAVE RYSKIEWICZ RETIRES..... 1
 THANKSGIVING..... 1
 DISTRACTED DRIVING..... 1
 CSA SCORES 2
 FALL TO WINTER DRIVING 2
 FREEZING/WET SNOW DRIVING. 2
 TLC TOP DOG AWARD 2
 CALIFORNIA ELECTRIFICATION ... 3
 ROADSIDE INSPECTIONS..... 3
 VETERANS' DAY 3
 MUDFLAPS..... 4
 RECENT HIRES 4
 BIRTHDAYS & ANNIVERSARIES ... 4
 PLOVER NEW HIRE..... 4
 DRIVING IN FOG..... 4

CSA SCORES

Category	Measure	Percentile
Unsafe Driving	2.27	23%
Crash Indicator	0.28	47%
Hours of Service	0.33	36%
Maintenance	3.02	40%
Controlled Substance	0.08	10%
HAZMAT	6	< 5 HM placardable vehicle inspections 80%
Driver Fitness	0.00	0%

Incidents of damage in the past month – 4

Load shift – Damage **TBD** – Driver to pay

Blindside backing hit other tractor at truck stop – **\$2500** insurance claim deductible. Driver did not get out and look.

Driver hit parked truck in lot. Did not ask shipper to move truck resulting in damage – **\$2500 deductible**

Driver and car accident shared fault. Tight space / blind spot driver did not verify it was clear to go – **\$2500 deductible**

FALL TO WINTER DRIVING

Drivers, as the weather is changing it’s time to think about prepping your trucks with the cold weather supplies necessary: boots, gloves, hat, jacket, warm blanket, candle, lighter or matches, and a bottle of DEF. As weather changes, DEF freezes at pump and is unavailable. You can get DEF and Fuel additives from the office. Make sure you have both in your truck. You should also have the trucker tools needed to unstick brakes etc. such as hammer, mallet, utility multitool, kitty litter/sand. DEF needs to be kept in the cab of the truck – not in the side box. It can freeze and explode.

Each person knows what they need. Make an effort during your next home time to start gathering supplies as there are inventory shortages.

[This article has some additional suggestions for gear you may want in order to be prepared for any emergencies this winter.](#)

FREEZING/WET SNOW DRIVING

When winter driving, if you see cars in the ditch – slow down. If you see trucks in the ditch, find a safe place to park.

If roads are wet/icy/snow and you see water spraying off trailer tires road is still decent for driving conditions. As soon as that spray disappears and or the road has a satin finish you are on ice – get off the road

If its above 20 degrees and snowing, keep heat on windshield to melt the snow. If its below 20 deg and snowing, keep heat away from windshield so that snow will bounce off and not stick to your windshield causing it to ice up.

TLC TOP DOG AWARD

Remember that TLC has a safety quiz in their monthly newsletter. Successfully complete at least one each quarter and you get a \$20 bonus in your paycheck from TLC. You’ll also be entered for a chance to win \$10,000. You must be in good standing and accident/injury free to qualify for the grand prize. See attached.



More freight. Less weight.

Newsletters and quizzes can be found here: <https://www.tlchrconnect.com/MyTLC/Newsletters>

CALIFORNIA ELECTRIFICATION

California lawmakers are seeking to phase out diesel big rigs. Beginning in 2024 when California’s proposed Advanced Clean Fleets Regulation takes effect, truck manufacturers will be required to sell an increasing percentage of electric trucks to motor carriers each year. By 2045, all trucks will need to be powered by either electric or hydrogen fuel cells if the ruling is approved which isn’t expected until the spring of 2023.

Truckers, railroaders, and other industry members have voiced concerns about the plan ranging from the cost of new vehicles to the current inadequacy of charging infrastructure. Trucking fleets are unanimous in believing that zero emissions vehicles are not currently capable of doing what is required by the ruling and do not believe that the infrastructure can be developed in the given time frame. There is a great amount of work to do to make this possible. It will take 65 to 160 megawatts every week, enough to power a small city. Additionally, current charge times are incompatible with hours-of-service regulations. This may turn what would normally be a one-day trip into a two-day trip.

Supporters from environmental groups and residents of disadvantaged neighborhoods near the state’s ports testified in large numbers about the benefits including cleaning the states air and reducing health concerns caused by diesel truck emissions such as asthma and cancer. Currently, medium and heavy-duty trucks make up 0.6% of registered vehicles in CA, but contribute 25% of emissions from transportation and 33% of nitrogen emissions.

California tends to drive vehicle standards through these mandates, which may cause a serious disruption in the future supply change. However this goes, the rest of the nation is likely to follow.

[-Summarized from Transport Topics](#)

VETERANS’ DAY

Thank you to all our veterans for your service to this country. Your bravery, sacrifice, and strength do not go unnoticed, and we will always be indebted to you and your family for all that you have given to the country. I would like to thank you very much for your service! Thank you for your time, bravery, and sacrifice for this country.



ROADSIDE INSPECTIONS LAST MONTH:

No bad roadside this month:

We had no clean roadsides last month.

Citations:

Overweight on tandems due to cargo shift - \$700 citation to driver

Long Idle Cost Last month:

Of Gallons Burned: **1606**

Average Fuel Cost: **\$5.21**

**\$\$ Wasted:
\$8367**

Thanks to everyone doing their part to decrease fuel waste!

Safety Bonus Program

10,500 miles	10,500+ miles	\$200
11,500 miles	11,500+ miles	\$200
Moving MPG	Determined threshold	\$50
Long idle %	Under 25%	\$100
HOS compliance	0 violations	\$50
No citations, accidents, incidents	0 issues	\$50
\$650 monthly! \$7800 yearly!!!		

RECENT HIRES

CJ Cotton

Everett Reeves

Shelley Morris

Cody Noth (July)

BIRTHDAYS & ANNIVERSARIES

Don Johnson – 11/1

Joe Spruell– 11/17

Andrew Schoon– 11/29

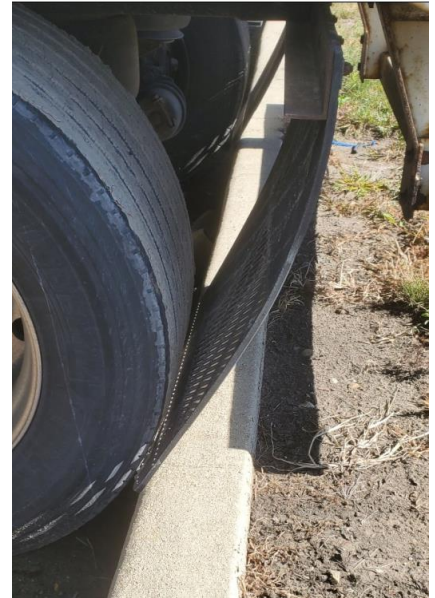
No Anniversaries this month

Thank You for Being a Part of Our Team!

MUDFLAPS

This is example of how mudflaps get ripped off.

If parking to curb, adjust the flaps so that tires don't bite them off.



PLOVER NEW HIRE

Cody Noth has been with us since the end of July. He and his brothers grew up around their dad's trucking and repair businesses, so he's no stranger to the industry. Additionally, he has also worked at Truck Country, a regional Freightliner truck dealership. In his spare time, he enjoys spending time with his wife and kids, repairing anything with an engine, and seeing what else he can cook with his smoker.

DRIVING IN FOG

When you unexpectedly find yourself driving through dense fog, you need to respond quickly and calmly to adjust to the sudden loss of visibility. Failure to do so can have tragic consequences.

The two most important safety measures you can take while driving in fog are to **slow down and to turn on your low-beam headlights**. It's critical to reduce speed to increase available reaction time. Additionally, your low-beam headlights will help you see the road more clearly. High-beam headlights, on the other hand, will increase glare in fog conditions.

- Use your windshield wipers and defroster to increase visibility and reduce glare from oncoming vehicles
- Turn off your cruise control.

- Use the right edge of the road or roadside reflectors as a guide
- In severe fog, emergency flashers may help increase your visibility to other drivers.
- Watch out for slow-moving and parked vehicles.
- Remember that fog makes the road wet and can turn to black ice on cold roads
- Avoid sudden stops – and if you must stop, steer off the roadway as far as safely possible.
- If you cannot see, pull completely off the road - turn on your hazard flashers immediately.

If conditions do not allow for safe travel, then you should find a truck stop or rest area to park until the fog has lifted. Your safety is of utmost importance!

-TLC Safety Tip